

STEP THREE

REAR OF PCB

ARDUINO NANO

MICRO SOCKET
FACE MIDDLE
OF PCB

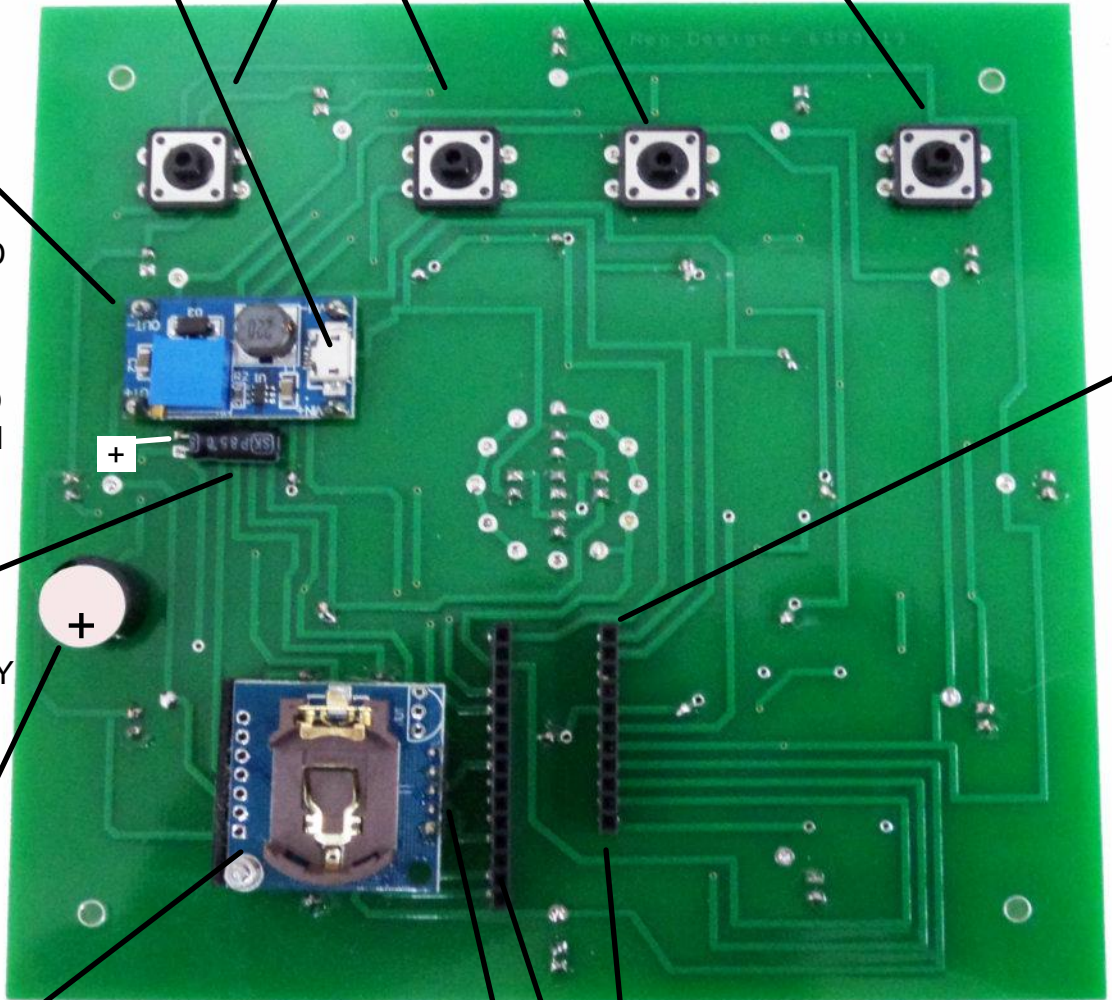
FIT FOUR PUSH BUTTONS AND SOLDER



POWER MODULE
FIT PINS FIRST AND
SOLDER. MOUNT
MODULE ON PINS
AND SOLDER.
DON'T ADJUST AND
ENSURE POWER IN
IS FACING THE
CENTRE OF PCB

FIT CAPACITOR
25MFD 25V
OBSERVE POLARITY

SOUNDER
MAKES SURE THE
+ IS FACING DOWN



IF YOU ARE USING HOLDERS FOR NANO
AND CLOCK CUT THE STRIP AND NOTE
PINS 3-13-14 HAVE BEEN REMOVED

THE CLOCK MODULE REQUIRES A 5 PIN
STRIP TO BE SOLDERED IN.
AFTER SOLDERING REMOVE THE
PLASTIC STRIP.

MOUNT CLOCK WITH SUPPLIED
BRACKET USING SUPPLIED NUT
AND BOLT

FIT BATTERY.

